



 paulwallace

Glover Close, West Cheshunt, EN7 6TT |  
£499,995 | Freehold



## Glover Close, West Cheshunt, EN7 6TT

This THREE BEDROOM semi detached property set in the heart of SOUGHT AFTER WEST CHESHUNT benefits from a spacious kitchen/diner opening to a LOW MAINTENANCE non overlooked REAR GARDEN with side access. Beautifully presented throughout and boasting ample space for off street parking, three good sized bedrooms and a family bathroom. With gas central heating and double glazed windows throughout. Ideally situated for both transport links to the A10 & M25 and walking distance to local schools and amenities.

### Key features

- Three Bedrooms
- Kitchen/Diner
- Off Street Parking
- Gas Central Heating
- Semi Detached
- Beautifully Presented
- Sought After West Cheshunt
- Double Glazed Windows

### Property Information

Tenure  
Freehold

Council Tax  
E

EPC Rating

Local Authority  
Broxbourne Borough Council



**Paul Wallace Estate Agents**  
Brookfield Centre  
Cheshunt  
Hertfordshire  
EN8 0NN



01992 781100



cheshunt@paulwallace.co.uk



www.paulwallace.co.uk



**Opening Times**

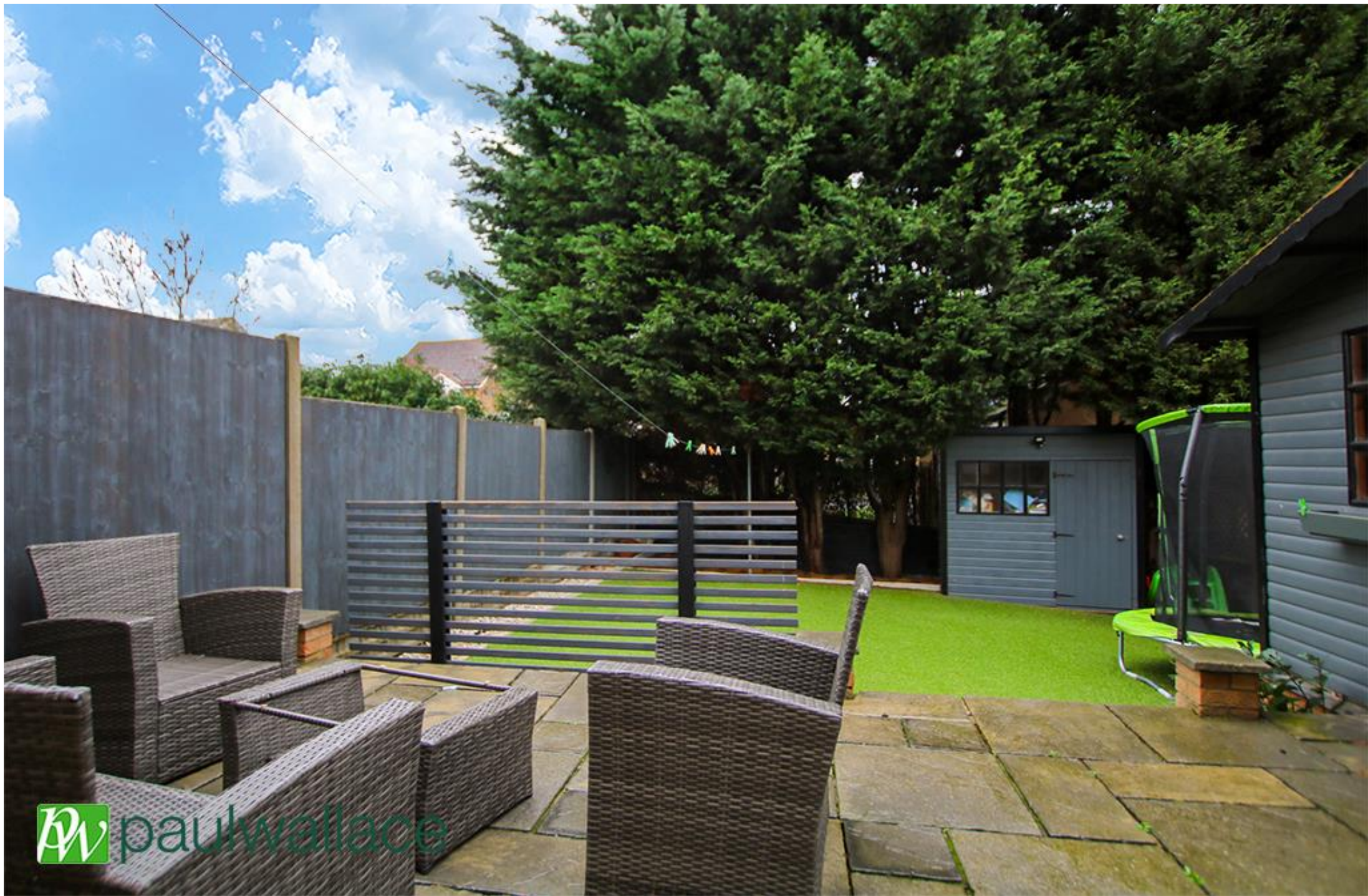
Mon - Fri	9 am to 6:30 pm
Sat	9 am to 5:30 pm
Sun	Closed
Bank Hols	Closed

**paulwallace**  
estate agents

Cheshunts leading estate agent.  
Please get in touch for your free  
property valuation.

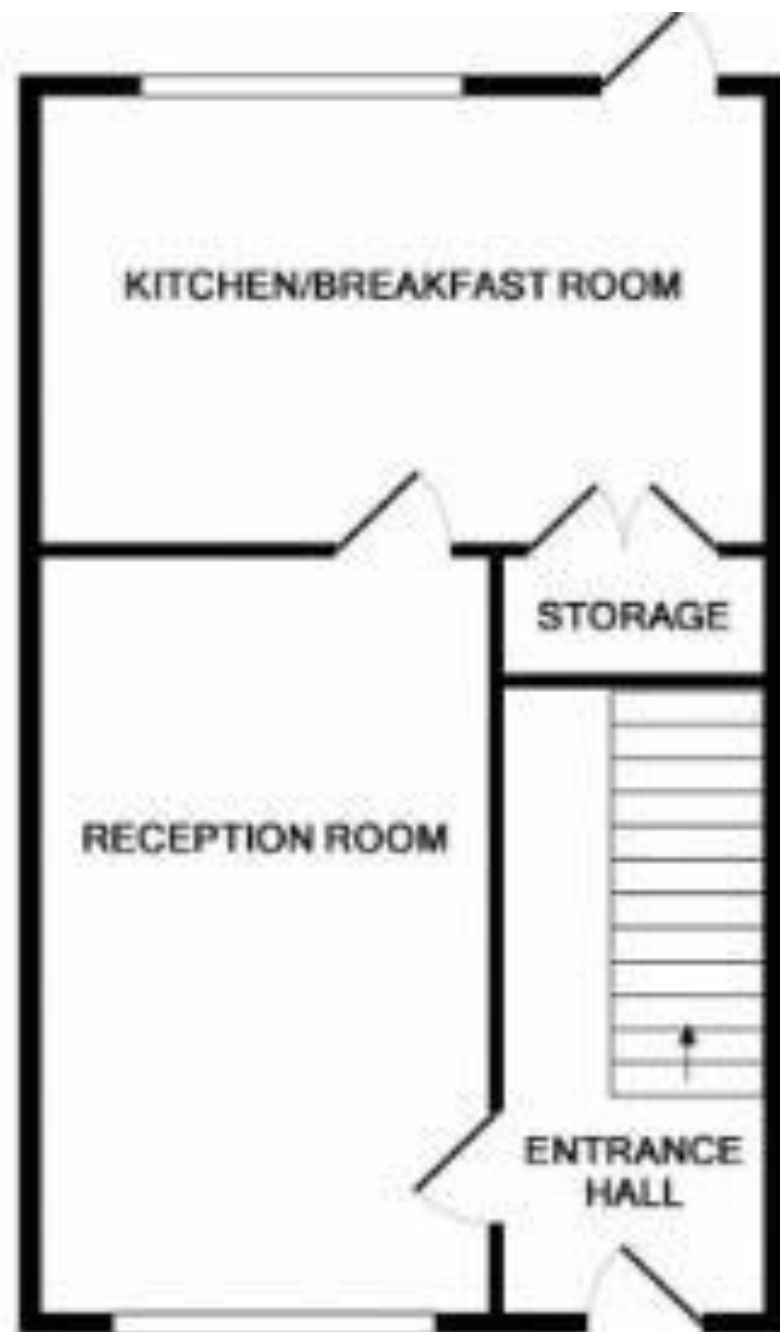




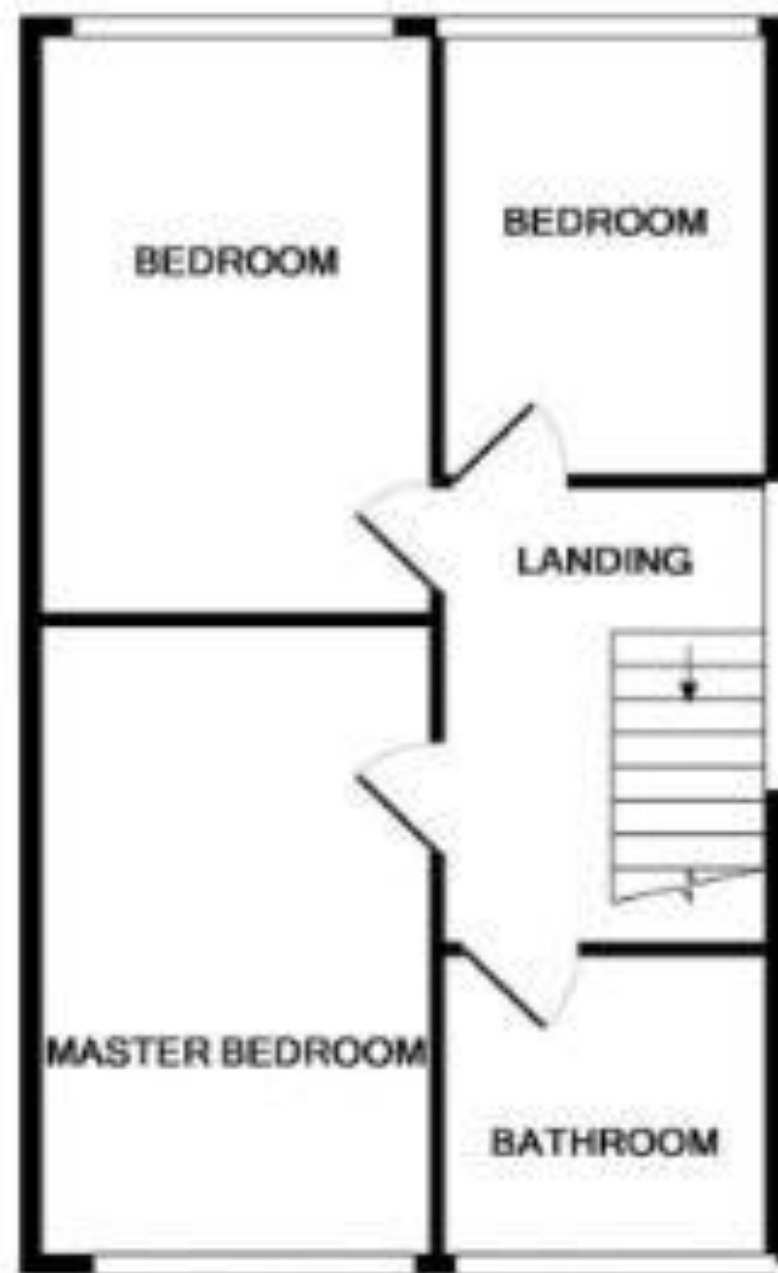








GROUND FLOOR



1ST FLOOR









Registered Address: Unit 3 The Brookfield Centre, Cheshunt, Herts, EN8 0NN Company Registration Number: OC414280 | VAT Number: 276958046©2022 Paul Wallace Group LLP trading as Paul Wallace Estate Agents



**Paul Wallace Estate Agents**  
Brookfield Centre  
Cheshunt  
Hertfordshire  
EN8 0NN



01992 781100



cheshunt@paulwallace.co.uk



www.paulwallace.co.uk



**Opening Times**

Mon - Fri	9 am to 6:30 pm
Sat	9 am to 5:30 pm
Sun	Closed
Bank Hols	Closed



Agents note: Whilst every care has been taken to prepare these sales particulars, they are for guidance purposes only. All measurements are approximate and are for general guidance purposes only and whilst every care has been taken to ensure their accuracy, they should not be relied upon. Potential buyers are advised to recheck measurements.